




HeuristicLab
A Paradigm-Independent and Extensible
Environment for Heuristic Optimization


Algorithm and Experiment Design with HeuristicLab
An Open Source Optimization Environment for Research and Education

Stefan Wagner & Gabriel Kronberger
Heuristic and Evolutionary Algorithms Laboratory (HEAL)
School of Informatics/Communications/Media, Campus Hagenberg
University of Applied Sciences Upper Austria
Hagenberg, Austria

{swagner, gkronber}@heuristiclab.com
http://dev.heuristiclab.com



Copyright is held by the author/owner(s).
GECCO'12 Companion, July 7–11, 2012, Philadelphia, PA, USA.
ACM 978-1-4503-1178-6/12/07.






Instructor Biographies

- **Stefan Wagner**
 - Full professor for complex software systems (since 2009)
University of Applied Sciences Upper Austria
 - Co-founder of the HEAL research group
 - Project manager and chief architect of HeuristicLab
 - PhD in technical sciences (2009)
Johannes Kepler University Linz, Austria
 - Associate professor (2005 – 2009)
University of Applied Sciences Upper Austria
 - <http://heal.heuristiclab.com/team/wagner>
- **Gabriel Kronberger**
 - Full professor for business intelligence (since 2011)
University of Applied Sciences Upper Austria
 - Member of the HEAL research group
 - Architect of HeuristicLab
 - PhD in technical sciences (2010)
Johannes Kepler University Linz, Austria
 - Research assistant (2005 – 2011)
University of Applied Sciences Upper Austria
 - <http://heal.heuristiclab.com/team/kronberger>


GECCO 2012 <http://dev.heuristiclab.com> 2



Agenda

- Objectives of the Tutorial
- Introduction
- Where to get HeuristicLab?
- Plugin Infrastructure
- Graphical User Interface
- Available Algorithms & Problems
- **Demonstration Part I: Working with HeuristicLab**
- **Demonstration Part II: Data-based Modeling**
- Some Additional Features
- Planned Features
- Team
- Suggested Readings
- Bibliography
- Questions & Answers

GECCO 2012 <http://dev.heuristiclab.com> 3



Objectives of the Tutorial

- Introduce general motivation and design principles of HeuristicLab
- Show where to get HeuristicLab
- Explain basic GUI usability concepts
- Demonstrate basic features
- Demonstrate editing and analysis of optimization experiments
- Demonstrate custom algorithms and graphical algorithm designer
- Demonstrate data-based modeling features
- Outline some additional features

GECCO 2012 <http://dev.heuristiclab.com> 4

Introduction



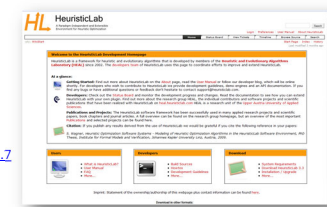
- Motivation and Goals
 - graphical user interface
 - paradigm independence
 - multiple algorithms and problems
 - large scale experiments and analyses
 - parallelization
 - extensibility, flexibility and reusability
 - visual and interactive algorithm development
 - multiple layers of abstraction
- Facts
 - development of HeuristicLab started in 2002
 - based on Microsoft .NET and C#
 - used in research and education
 - second place at the *Microsoft Innovation Award 2009*
 - open source (GNU General Public License)
 - version 3.3.0 released on May 18th, 2010
 - latest version 3.3.7 released on July 8th, 2012



Where to get HeuristicLab?



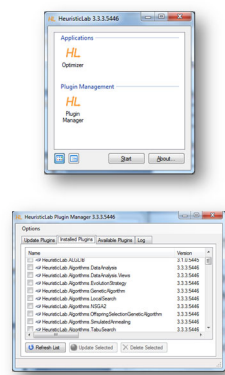
- Download binaries
 - deployed as ZIP archives
 - latest stable version 3.3.7
 - released on July 8th, 2012
 - daily trunk builds
 - <http://dev.heuristiclab.com/download>
- Check out sources
 - SVN repository
 - HeuristicLab 3.3.7 tag
 - <http://dev.heuristiclab.com/svn/hl/core/tags/3.3.7>
 - current development trunk
 - <http://dev.heuristiclab.com/svn/hl/core/trunk>
- License
 - GNU General Public License (Version 3)
- System requirements
 - Microsoft .NET Framework 4.0 Full Version
 - enough RAM and CPU power ;-)



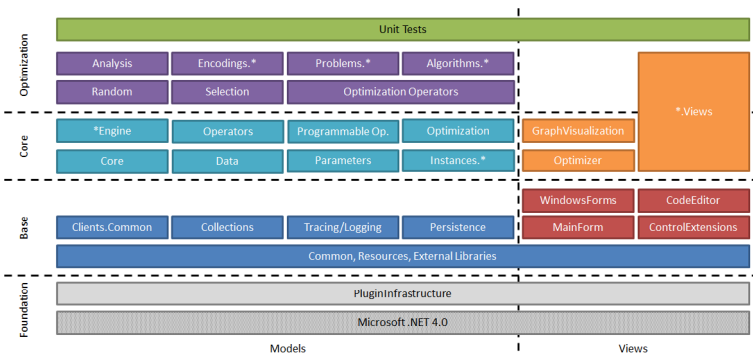
Plugin Infrastructure



- HeuristicLab consists of many assemblies
 - 119 plugins in HeuristicLab 3.3.7
 - plugins can be loaded or unloaded at runtime
 - plugins can be updated via internet
 - application plugins provide GUI frontends
- Extensibility
 - developing and deploying new plugins is easy
 - dependencies are explicitly defined, automatically checked and resolved
 - automatic discovery of interface implementations (service locator pattern)
- Plugin Manager
 - GUI to check, install, update or delete plugins



Plugin Architecture

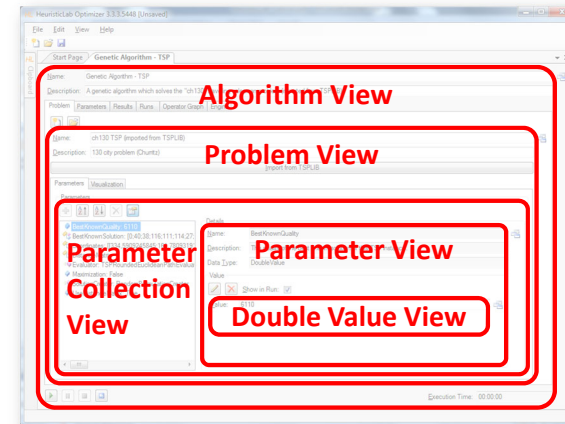


Graphical User Interface



- HeuristicLab GUI is made up of views
 - views are visual representations of content objects
 - views are composed in the same way as their content
 - views and content objects are loosely coupled
 - multiple different views may exist for the same content
- Drag & Drop
 - views support drag & drop operations
 - content objects can be copied or moved (shift key)
 - enabled for collection items and content objects

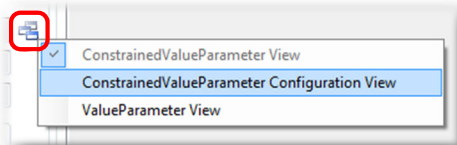
Graphical User Interface



Graphical User Interface



- ViewHost
 - control which hosts views
 - right-click on windows icon to switch views
 - double-click on windows icon to open another view
 - drag & drop windows icon to copy contents



Available Algorithms & Problems



Algorithms

- Evolution Strategy
- Genetic Algorithm
- Genetic Programming
- Hungarian Algorithm
- Island Genetic Algorithm
- Island Offspring Selection Genetic Algorithm
- Local Search
- NSGA-II
- Offspring Selection Genetic Algorithm
- Particle Swarm Optimization
- Robust Taboo Search
- SASEGASA
- Simulated Annealing
- Tabu Search
- User-defined Algorithm
- Variable Neighborhood Search
- Performance Benchmarks
- Cross Validation
- k-Means
- Linear Discriminant Analysis
- Linear Regression
- Multinomial Logit Classification
- Nearest Neighbor Regression and Classification
- Neural Network Regression and Classification
- Random Forest Regression and Classification
- Support Vector Regression and Classification

Problems

- Artificial Ant
- Classification
- Clustering
- External Evaluation Problem
- Knapsack
- Lawn Mower
- Linear Assignment
- OneMax
- Quadratic Assignment
- Regression
- Single-Objective Test Function
- Symbolic Classification
- Symbolic Regression
- Traveling Salesman
- User-defined Problem
- Vehicle Routing

Agenda



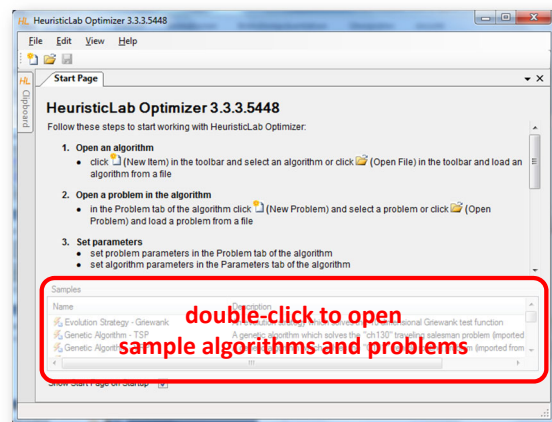
- Objectives of the Tutorial
- Introduction
- Where to get HeuristicLab?
- Plugin Infrastructure
- Graphical User Interface
- Available Algorithms & Problems
- **Demonstration Part I: Working with HeuristicLab**
- **Demonstration Part II: Data-based Modeling**
- Some Additional Features
- Planned Features
- Team
- Suggested Readings
- Bibliography
- Questions & Answers

Demonstration Part I: Working with HeuristicLab

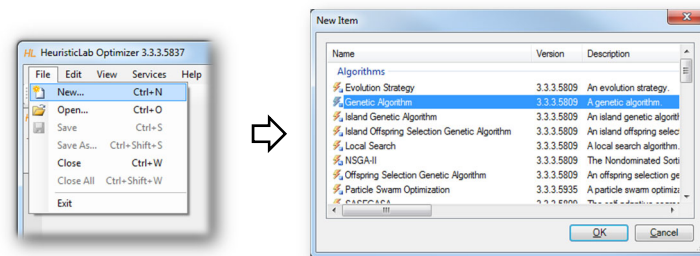


- Create, Parameterize and Execute Algorithms
- Save and Load Items
- Create Batch Runs and Experiments
- Multi-core CPUs and Parallelization
- Analyze Runs
- Analyzers
- Building User-Defined Algorithms

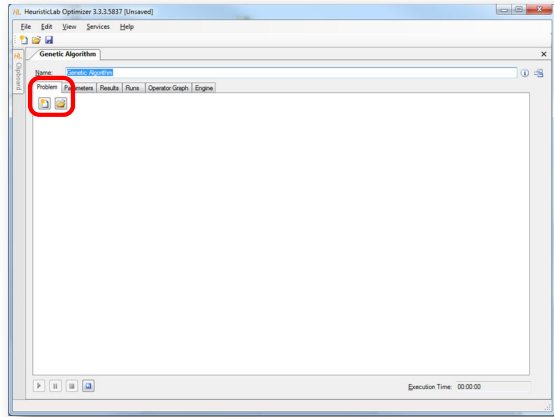
HeuristicLab Optimizer



Create Algorithm



Create or Load Problem

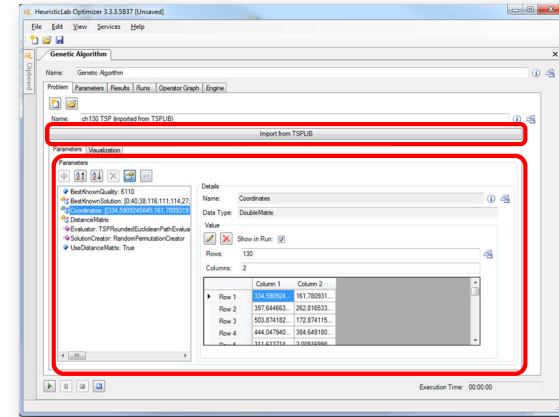


GECCO 2012

<http://dev.heuristiclab.com>

17

Import or Parameterize Problem Data

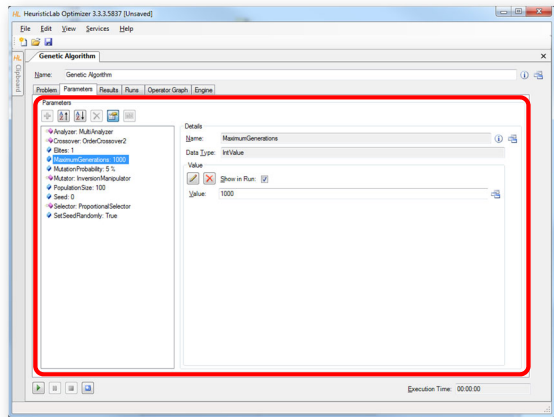


GECCO 2012

<http://dev.heuristiclab.com>

18

Parameterize Algorithm

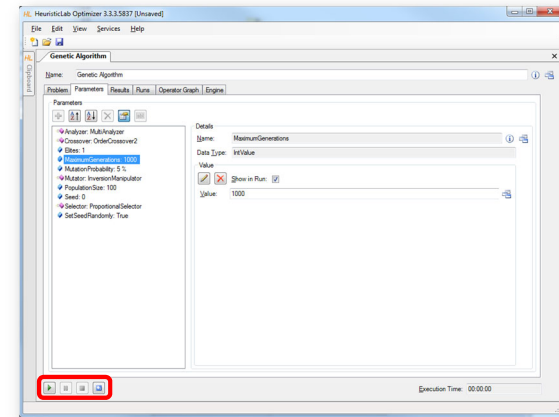


GECCO 2012

<http://dev.heuristiclab.com>

19

Start, Pause, Resume, Stop and Reset

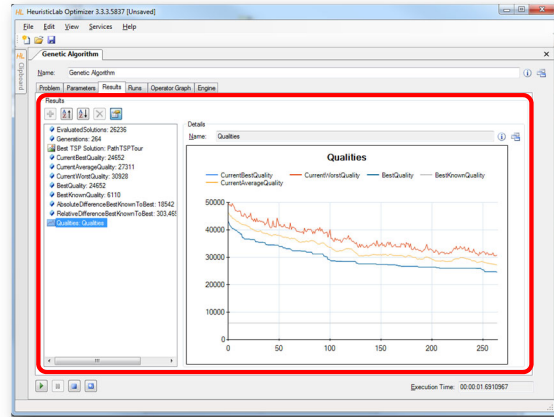


GECCO 2012

<http://dev.heuristiclab.com>

20

Inspect Results



GECCO 2012

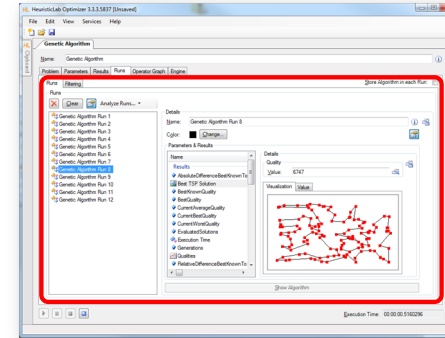
<http://dev.heuristiclab.com>

21

Compare Runs



- A run is created each time when the algorithm is stopped
 - runs contain all results and parameter settings
 - previous results are not forgotten and can be compared



GECCO 2012

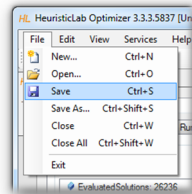
<http://dev.heuristiclab.com>

22

Save and Load



- Save to and load from disk
 - HeuristicLab items (i.e., algorithms, problems, experiments, ...) can be saved to and loaded from a file
 - algorithms can be paused, saved, loaded and resumed
 - data format is custom compressed XML
 - saving and loading files might take several minutes
 - saving and loading large experiments requires some memory



GECCO 2012

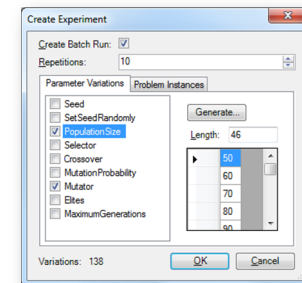
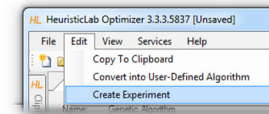
<http://dev.heuristiclab.com>

23

Create Batch Runs and Experiments



- Batch runs
 - execute the same optimizer (e.g. algorithm, batch run, experiment) several times
- Experiments
 - execute different optimizers
 - suitable for large scale algorithm comparison and analysis
- Experiments and batch runs can be nested
- Generated runs can be compared

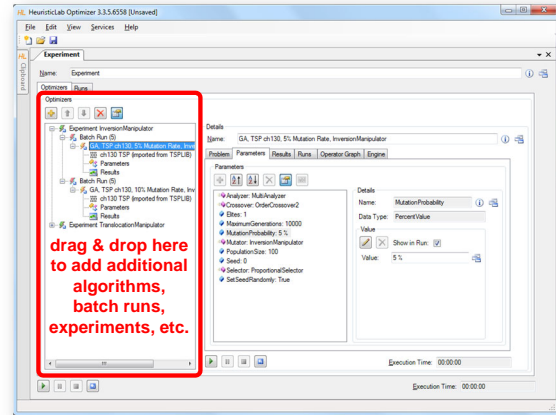


GECCO 2012

<http://dev.heuristiclab.com>

24

Create Batch Runs and Experiments

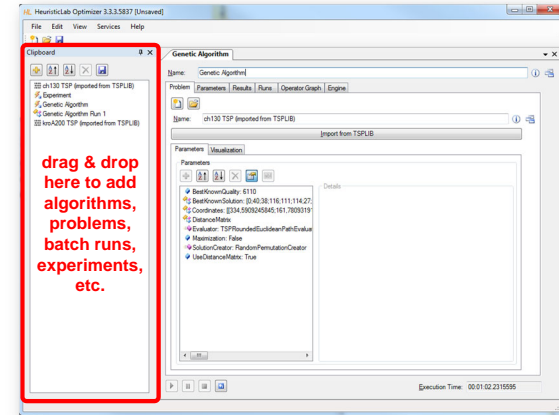


GECCO 2012

<http://dev.heuristiclab.com>

25

Clipboard



GECCO 2012

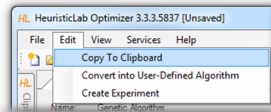
<http://dev.heuristiclab.com>

26

Clipboard



- Store items
 - click on the buttons to add or remove items
 - drag & drop items on the clipboard
 - use the menu to add a copy of a shown item to the clipboard



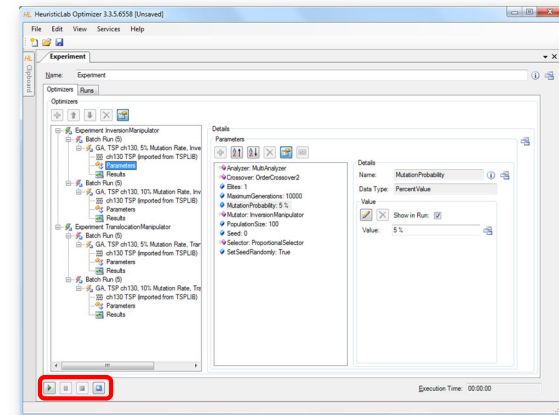
- Show items
 - double-click on an item in the clipboard to show its view
- Save and restore clipboard content
 - click on the save button to write the clipboard content to disk
 - clipboard is automatically restored when HeuristicLab is started the next time

GECCO 2012

<http://dev.heuristiclab.com>

27

Start, Pause, Resume, Stop, Reset

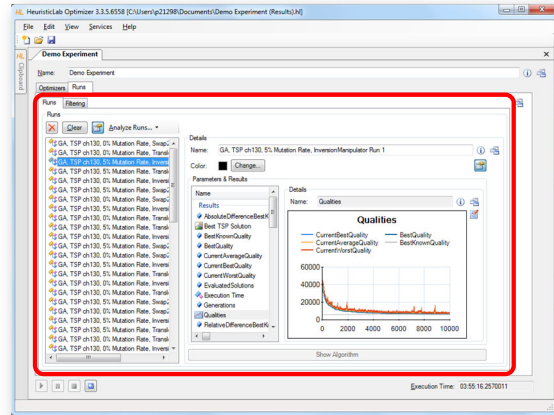


GECCO 2012

<http://dev.heuristiclab.com>

28

Compare Runs



GECCO 2012

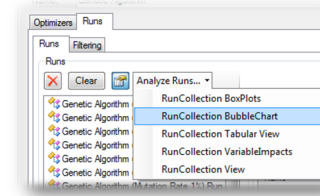
<http://dev.heuristiclab.com>

29

Analyze Runs



- HeuristicLab provides interactive views to analyze and compare all runs of a run collection
 - textual analysis
 - RunCollection Tabular View
 - graphical analysis
 - RunCollection BubbleChart
 - RunCollection BoxPlots
 - RunCollection DataTable View
- Filtering is automatically applied to all open run collection views

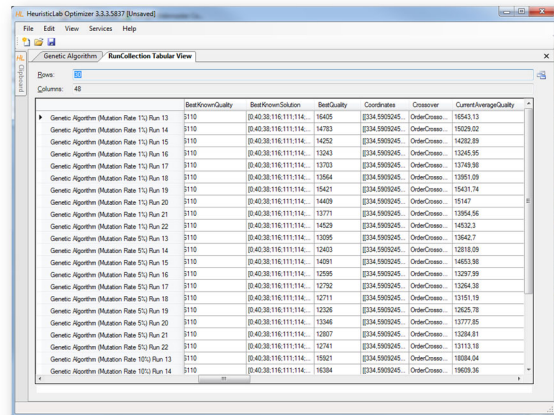


GECCO 2012

<http://dev.heuristiclab.com>

30

RunCollection Tabular View



GECCO 2012

<http://dev.heuristiclab.com>

31

RunCollection Tabular View



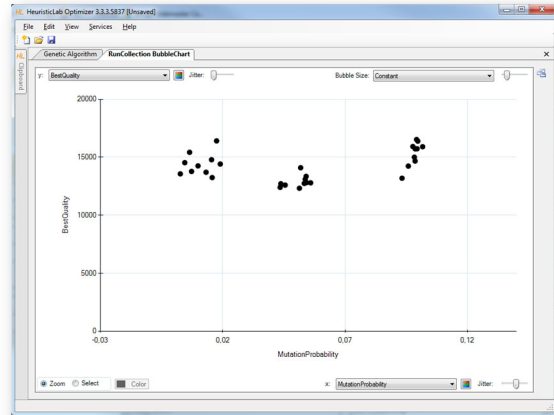
- Sort columns
 - click on column header to sort column
 - Ctrl-click on column header to sort multiple columns
- Show or hide columns
 - right-click on table to open dialog to show or hide columns
- Compute statistical values
 - select multiple numerical values to see count, sum, minimum, maximum, average and standard deviation
- Select, copy and paste into other applications

GECCO 2012

<http://dev.heuristiclab.com>

32

RunCollection BubbleChart



GECCO 2012

<http://dev.heuristiclab.com>

33

RunCollection BubbleChart



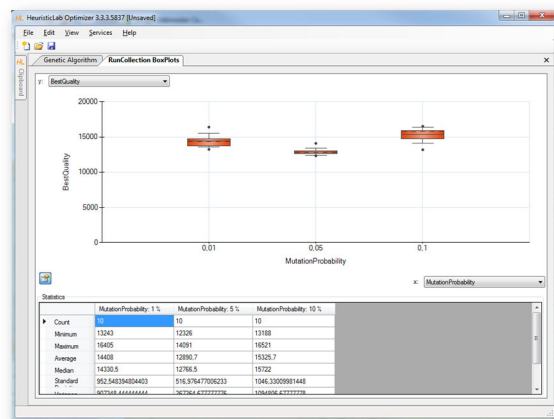
- Choose values to plot
 - choose which values to show on the x-axis, the y-axis and as bubble size
 - possible values are all parameter settings and results
- Add jitter
 - add jitter to separate overlapping bubbles
- Zoom in and out
 - click on Zoom and click and drag in the chart area to zoom in
 - double click on the chart area background or on the circle buttons beside the scroll bars to zoom out
- Color bubbles
 - click on Select, choose a color and click and drag in the chart area to select and color bubbles
 - apply coloring automatically by clicking on the axis coloring buttons
- Show runs
 - double click on a bubble to open its run
- Export image
 - right-click to open context menu to copy or save image
 - save image as pixel (BMP, JPG, PNG, GIF, TIF) or vector graphics (EMF)
- Show box plots
 - right-click to open context menu to show box plots view

GECCO 2012

<http://dev.heuristiclab.com>

34

RunCollection BoxPlots



GECCO 2012

<http://dev.heuristiclab.com>

35

RunCollection BoxPlots



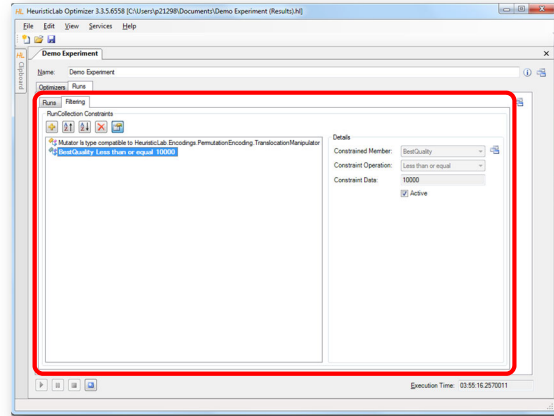
- Choose values to plot
 - choose which values to show on the x-axis and y-axis
 - possible values are all parameter settings and results
- Zoom in and out
 - click on Zoom and click and drag in the chart area to zoom in
 - double click on the chart area background or on the circle buttons beside the scroll bars to zoom out
- Show or hide statistical values
 - click on the lower left button to show or hide statistical values
- Export image
 - right-click to open context menu to copy or save image
 - save image as pixel (BMP, JPG, PNG, GIF, TIF) or vector graphics (EMF)

GECCO 2012

<http://dev.heuristiclab.com>

36

Filter Runs

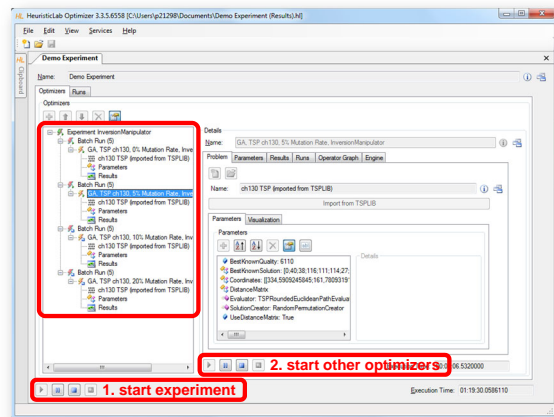


Multi-core CPUs and Parallelization

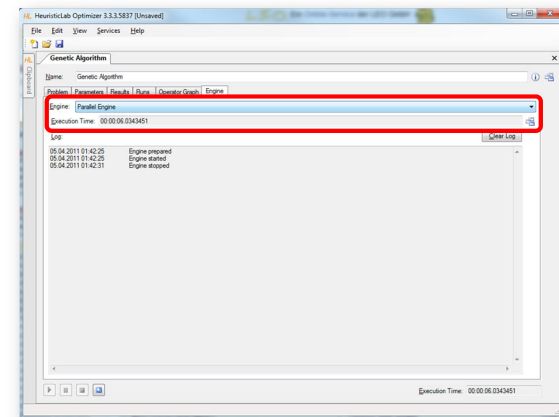


- Parallel execution of optimizers in experiments
 - optimizers in an experiment are executed sequentially from top to bottom per default
 - experiments support parallel execution of their optimizers
 - select a not yet executed optimizer and start it manually to utilize another core
 - execution of one of the next optimizers is started automatically after an optimizer is finished
- Parallel execution of algorithms
 - HeuristicLab provides special operators for parallelization
 - engines decide how to execute parallel operations
 - sequential engine executes everything sequentially
 - parallel engine executes parallel operations on multiple cores
 - Hive engine (under development) executes parallel operations on multiple computers
 - all implemented algorithms support parallel solution evaluation

Parallel Execution of Experiments



Parallel Execution of Algorithms

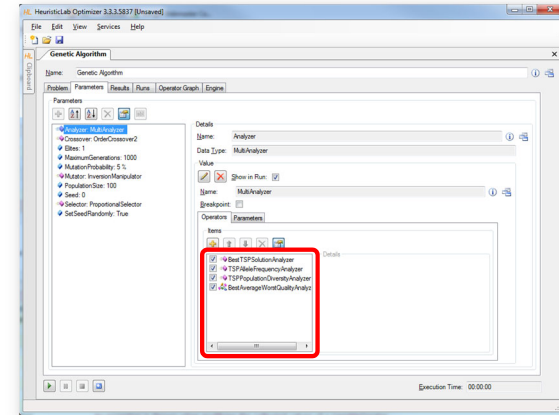


Analyzers

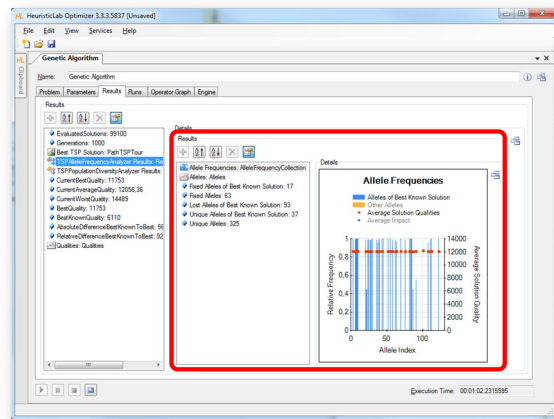


- Special operators for analysis purposes
 - are executed after each iteration
 - serve as general purpose extension points of algorithms
 - can be selected and parameterized in the algorithm
 - perform algorithm-specific and/or problem-specific tasks
 - some analyzers are quite costly regarding runtime and memory
 - implementing and adding custom analyzers is easy
- Examples
 - TSPAlleleFrequencyAnalyzer
 - TSPPopulationDiversityAnalyzer
 - SuccessfulOffspringAnalyzer
 - SymbolicDataAnalysisVariableFrequencyAnalyzer
 - SymbolicRegressionSingleObjectiveTrainingBestSolutionAnalyzer
 - ...

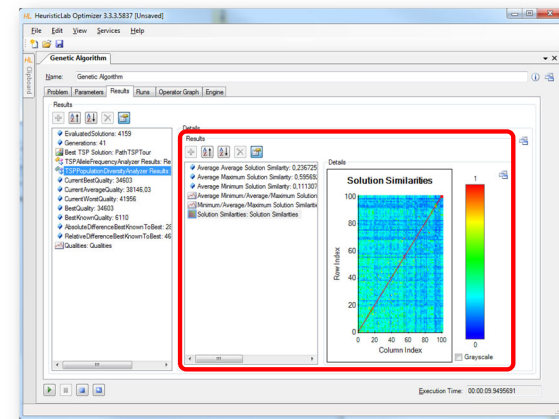
Analyzers



TSPAlleleFrequencyAnalyzer



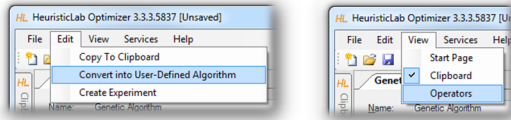
TSPPopulationDiversityAnalyzer



Building User-Defined Algorithms

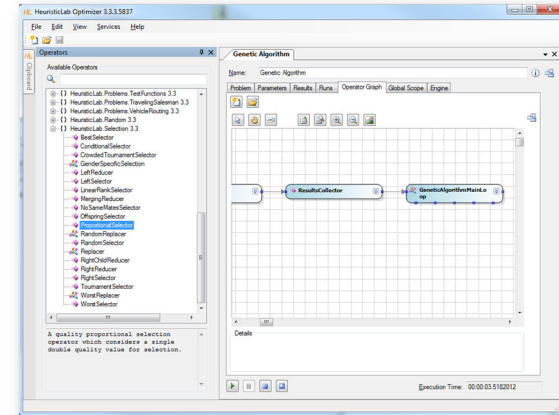


- Operator graphs
 - algorithms are represented as operator graphs
 - operator graphs of user-defined algorithms can be changed
 - algorithms can be defined in the graphical algorithm designer
 - use the menu to convert a standard algorithm into a user-defined algorithm

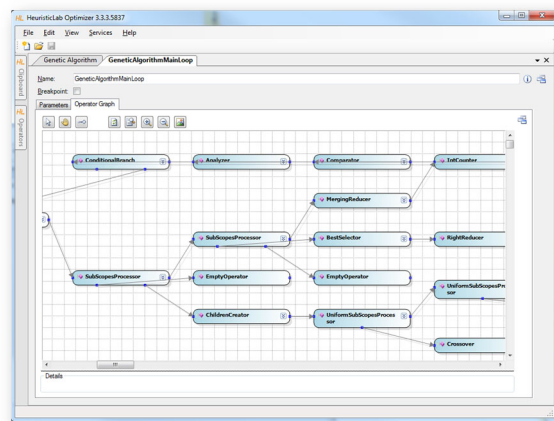


- Operators sidebar
 - drag & drop operators into an operator graph
- Programmable operators
 - add programmable operators in order to implement custom logic in an algorithm
 - no additional development environment needed
- Debug algorithms
 - use the debug engine to obtain detailed information during algorithm execution

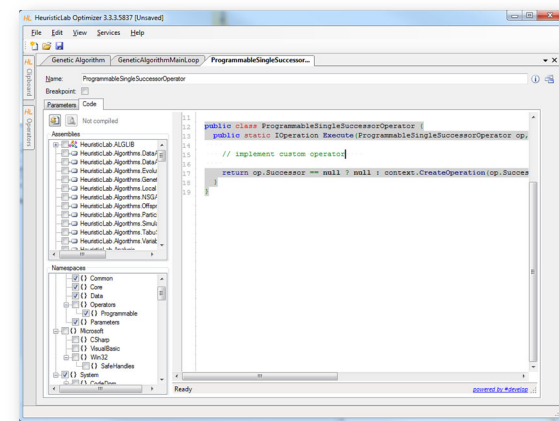
Building User-Defined Algorithms



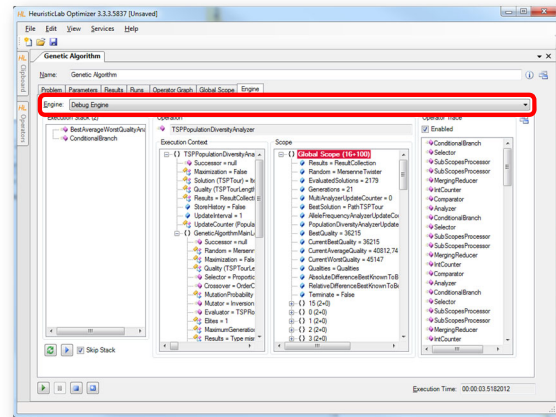
Building User-Defined Algorithms



Programmable Operators



Debugging Algorithms



Agenda



- Objectives of the Tutorial
- Introduction
- Where to get HeuristicLab?
- Plugin Infrastructure
- Graphical User Interface
- Available Algorithms & Problems
- **Demonstration Part I: Working with HeuristicLab**
- **Demonstration Part II: Data-based Modeling**
- Some Additional Features
- Planned Features
- Team
- Suggested Readings
- Bibliography
- Questions & Answers

Demonstration Part II: Data-based Modeling



- Symbolic regression with HeuristicLab
- Model simplification
- Variable relevance analysis
- Classification with HeuristicLab

Reminder: Data-based Modeling



- Learn association of input variables to labels
- Common tasks
 - Regression (real-valued labels)
 - Classification (discrete labels)
 - Clustering (no labels, group similar observations)

	x1	x2	x3	x4	x5	x6	y
52.0085	58497.7	26.9956	24.0391	12.9005	66.2633	4.027	
52.9874	59181.1	27.0061	23.7483	12.7239	66.8367	4.154	
54.0505	58879.2	26.8679	23.5869	12.5877	67.6773	4.047	
55.3182	58982.3	27.1852	23.7869	12.6229	67.7128	4.118	
46.5388	59270.3	26.4421	24.2601	12.5892	65.7425	4.743	
56.0167	58234.5	26.1072	23.4412	12.4224	67.9462	4.042	
57.0168	58021.7	26.2513	23.3085	12.3036	69.4392	3.721	
57.0139	59228.5	26.2285	23.4041	12.3685	68.3322	3.593	
62.5214	49855.7	26.3076	22.7812	12.0711	70.3331	3.785	
69.9885	53534.4	25.5916	21.3448	11.0299	73.7138	3.028	
70.0156	55058.2	25.5759	21.4617	11.0915	72.9846	3.137	

$$y = f(x, w) + \epsilon$$

Data-based Modeling in HeuristicLab



- Symbolic regression and classification based on genetic programming
- External libraries (alglib, libSVM):
 - Linear Regression
 - Linear Discriminate Analysis
 - Support Vector Machines
 - Random Forest
 - Neural Networks
 - K-Means Clustering

GECCO 2012

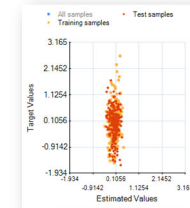
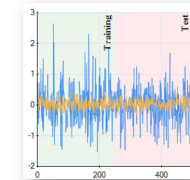
<http://dev.heuristiclab.com>

53

Case Studies



- Demonstration
 - problem configuration
 - analysis of results
 - accuracy metrics
 - visualization of model output



GECCO 2012

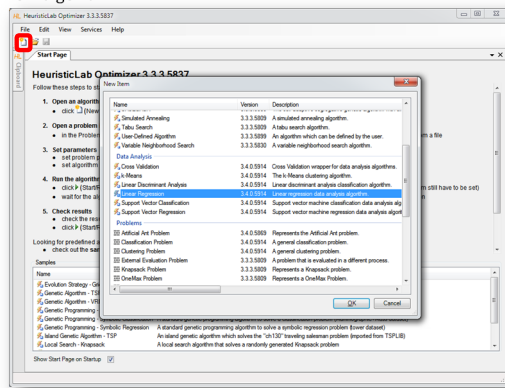
<http://dev.heuristiclab.com>

54

Linear Regression



- Create new algorithm

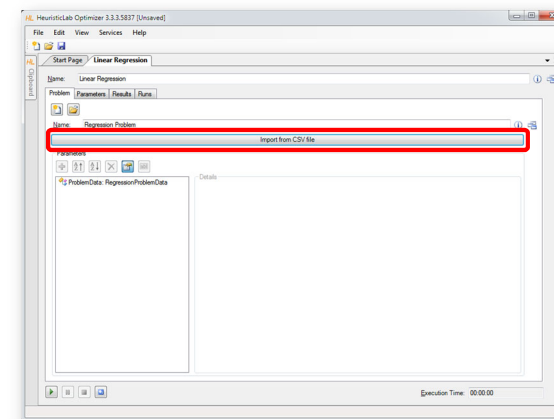


GECCO 2012

<http://dev.heuristiclab.com>

55

Import Data from CSV-File

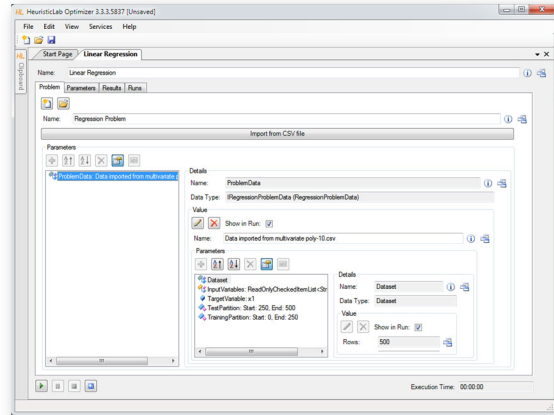


GECCO 2012

<http://dev.heuristiclab.com>

56

Inspect and Configure Dataset

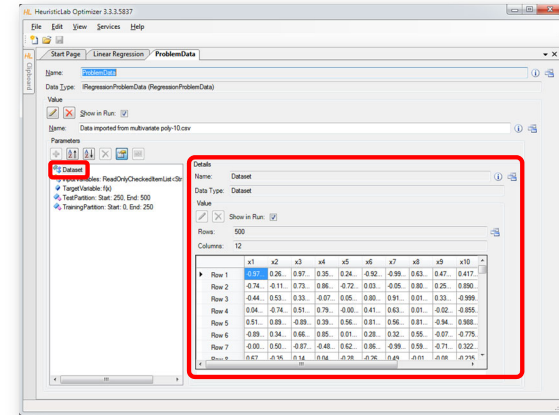


GECCO 2012

<http://dev.heuristiclab.com>

57

Inspect Imported Data

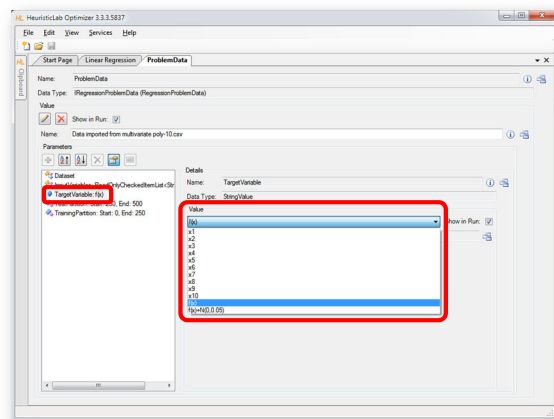


GECCO 2012

<http://dev.heuristiclab.com>

58

Set Target Variable

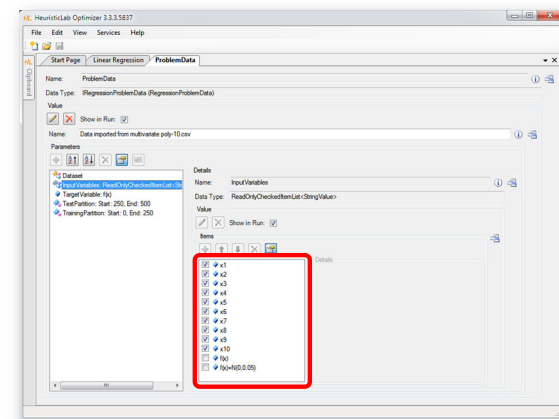


GECCO 2012

<http://dev.heuristiclab.com>

59

Select Input Variables

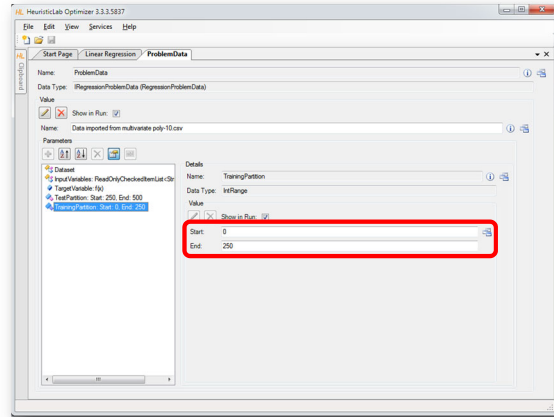


GECCO 2012

<http://dev.heuristiclab.com>

60

Configure Training and Test Partitions

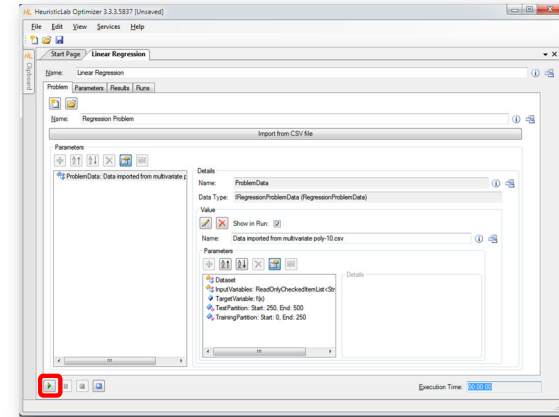


GECCO 2012

<http://dev.heuristiclab.com>

61

Run Linear Regression

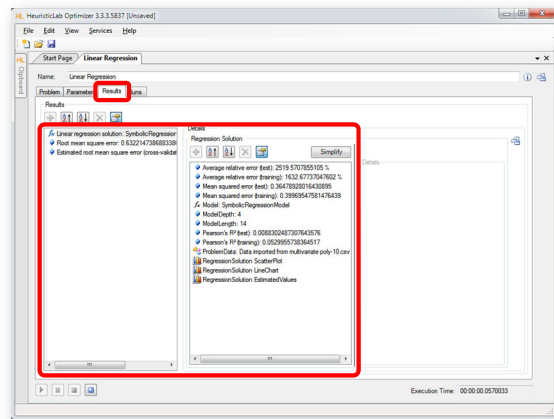


GECCO 2012

<http://dev.heuristiclab.com>

62

Inspect Results

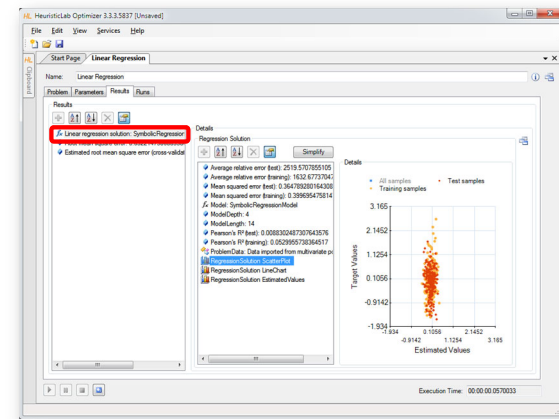


GECCO 2012

<http://dev.heuristiclab.com>

63

Inspect Scatterplot of Predicted and Target Values

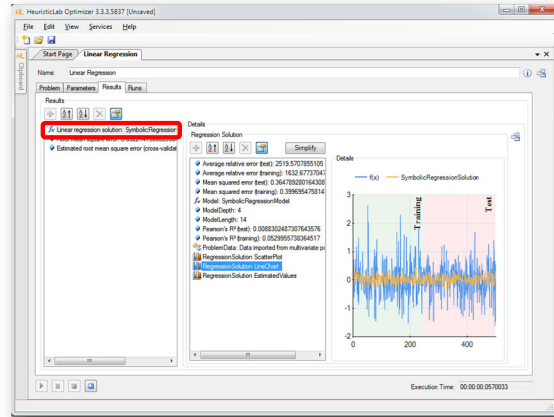


GECCO 2012

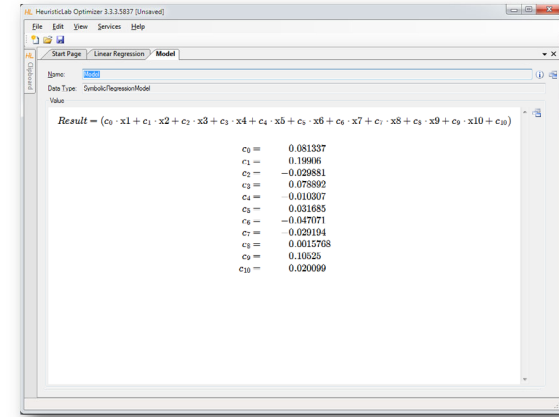
<http://dev.heuristiclab.com>

64

Inspect Linechart



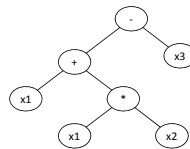
Inspect the Model



Symbolic Regression with HeuristicLab



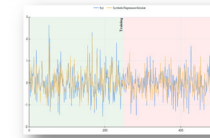
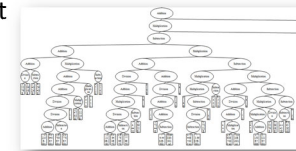
- Goal: produce a nonlinear symbolic regression model using genetic programming
- Reminder: Symbolic Regression
 - evolve variable-length models
 - model representation: symbolic expression tree
 - structure and model parameters are evolved side-by-side
 - white-box models



Symbolic Regression with HeuristicLab



- Demonstration
 - problem configuration
 - function set and terminal set
 - model size constraints
 - evaluation
- Algorithm configuration
- Analysis of results
 - model accuracy
 - model structure

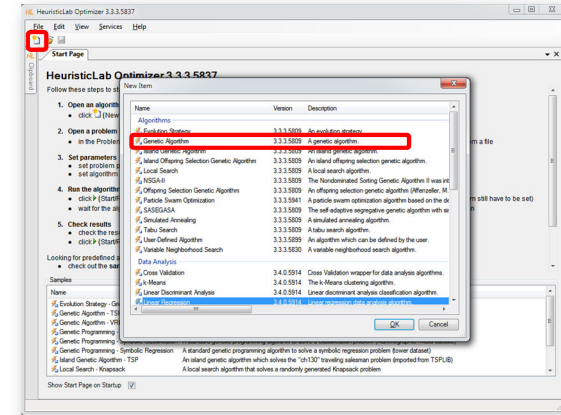


Case Study

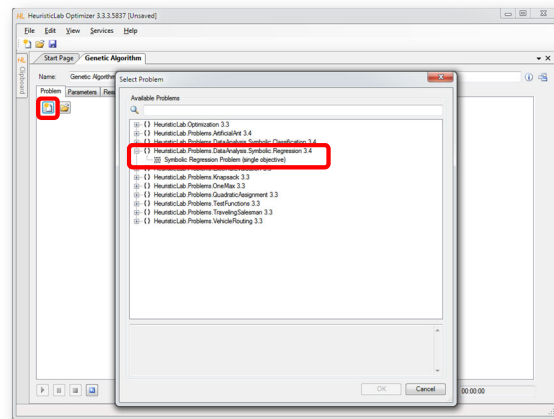


- Symbolic regression GP benchmark instances available
- In the following: Poly-10 benchmark problem
 - 10 input variables $x_1 \dots x_{10}$
 - $y = x_1 x_2 + x_3 x_4 + x_5 x_6 + x_1 x_7 x_9 + x_3 x_6 x_{10}$
 - non-linear modeling approach necessary
 - download: <http://dev.heuristiclab.com/AdditionalMaterial#GECCO2012>

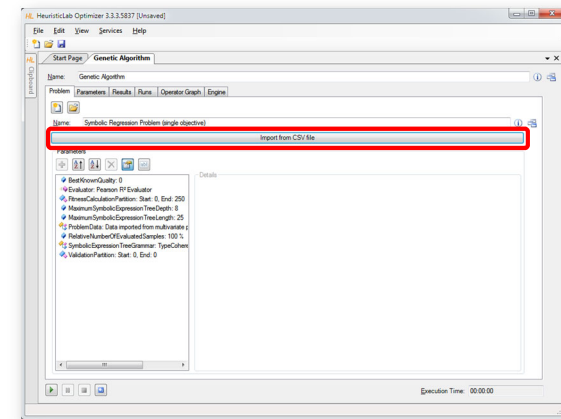
Create New Genetic Algorithm



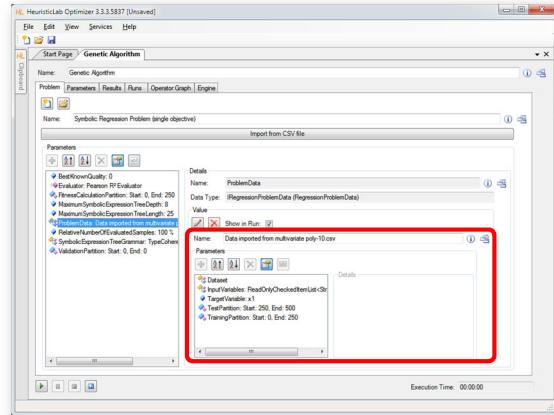
Create New Symbolic Regression Problem



Import Data



Inspect Data and Configure Dataset

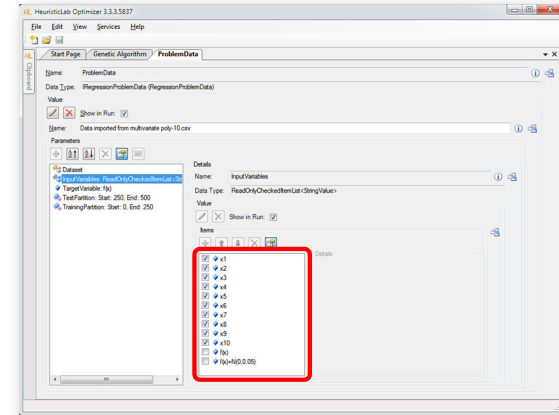


GECCO 2012

<http://dev.heuristiclab.com>

73

Set Target and Input Variables

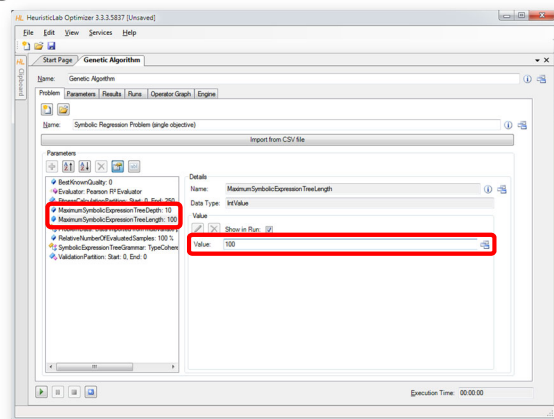


GECCO 2012

<http://dev.heuristiclab.com>

74

Configure Maximal Model Depth and Length

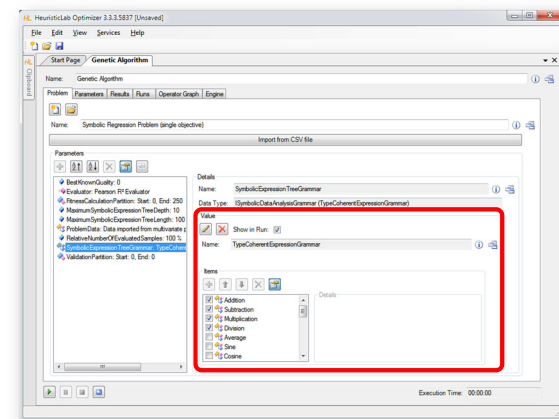


GECCO 2012

<http://dev.heuristiclab.com>

75

Configure Function Set (Grammar)

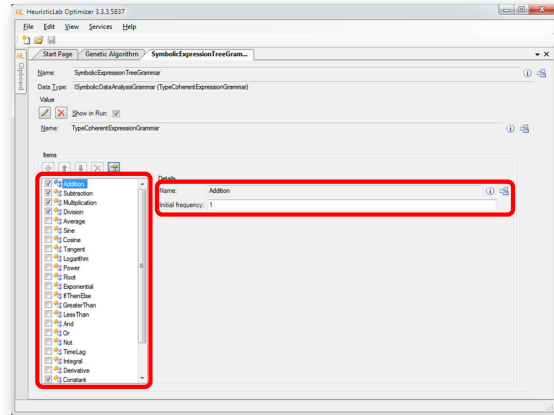


GECCO 2012

<http://dev.heuristiclab.com>

76

Configure Function Set (Grammar)

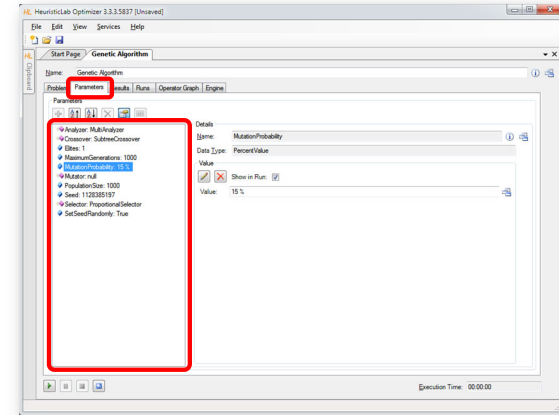


GECCO 2012

<http://dev.heuristiclab.com>

77

Configure Algorithm Parameters

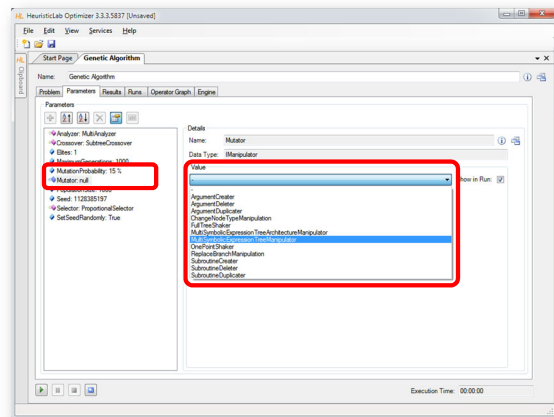


GECCO 2012

<http://dev.heuristiclab.com>

78

Configure Mutation Operator

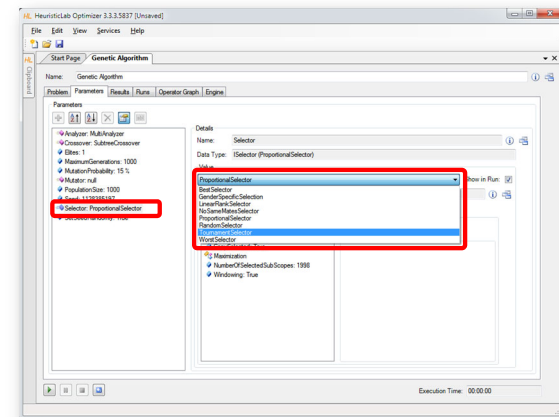


GECCO 2012

<http://dev.heuristiclab.com>

79

Configure Selection Operator

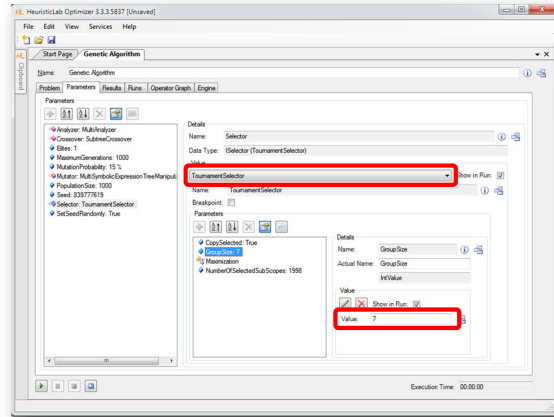


GECCO 2012

<http://dev.heuristiclab.com>

80

Configure Tournament Group Size

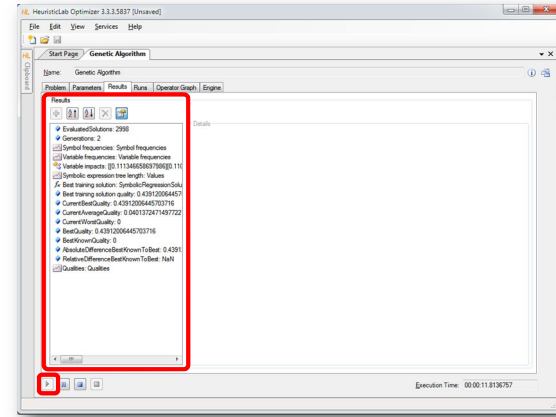


GECCO 2012

<http://dev.heuristiclab.com>

81

Start Algorithm and Inspect Results

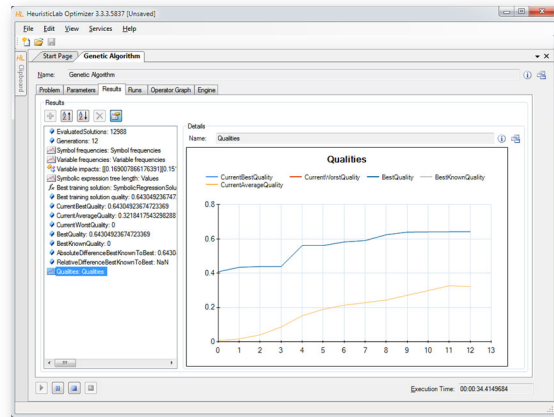


GECCO 2012

<http://dev.heuristiclab.com>

82

Inspect Quality Chart

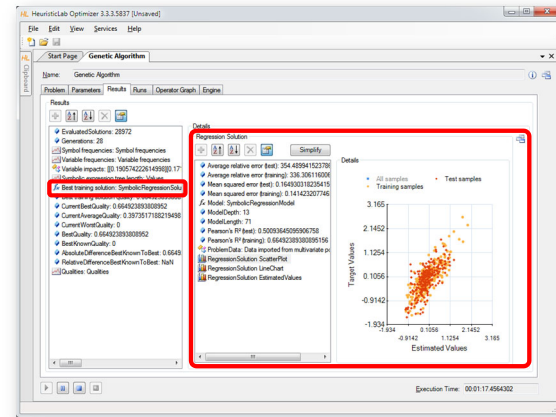


GECCO 2012

<http://dev.heuristiclab.com>

83

Inspect Best Model on Training Partition

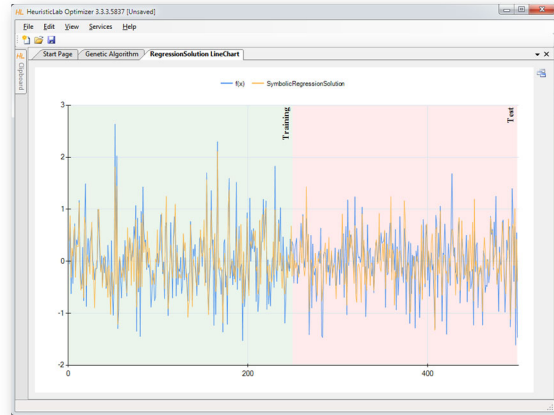


GECCO 2012

<http://dev.heuristiclab.com>

84

Inspect Linechart of Best Model on Training Partition

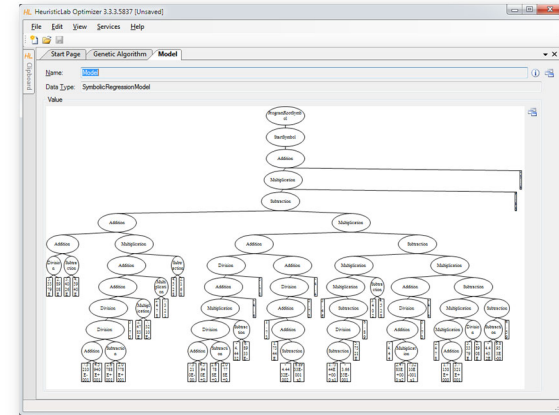


GECCO 2012

<http://dev.heuristiclab.com>

85

Inspect Structure of Best Model on Training Partition



GECCO 2012

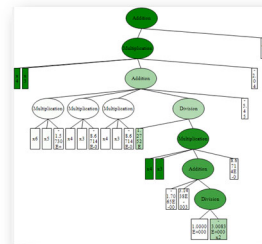
<http://dev.heuristiclab.com>

86

Model Simplification and Export



- Demonstration
 - automatic simplification
 - visualization of node impacts
 - manual simplification
 - online update of results
 - model export
 - MATLAB
 - LaTeX



$$\text{Result} = a(x) + b(x) + c(x)$$

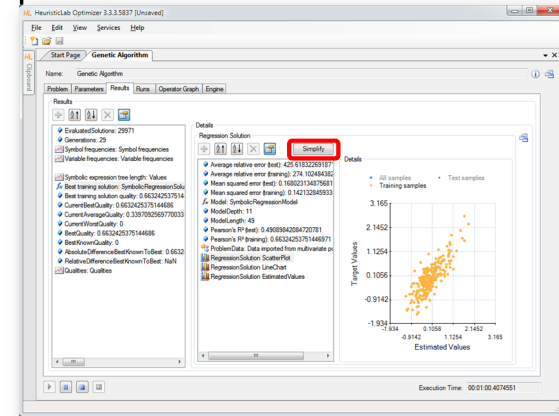
$$\left(a(x) + b(x) + c(x) + d(x) + e(x) + f(x) + g(x) + h(x) + i(x) + j(x) + k(x) + l(x) + m(x) + n(x) + o(x) + p(x) + q(x) + r(x) + s(x) + t(x) + u(x) + v(x) + w(x) + x(x) + y(x) + z(x) + \frac{c_{11} + d_{10}}{c_{12} + d_{11}} + \frac{1}{118} + e_{19} + f_{21} \right) + g_{21}$$

GECCO 2012

<http://dev.heuristiclab.com>

87

Detailed Model Analysis and Simplification

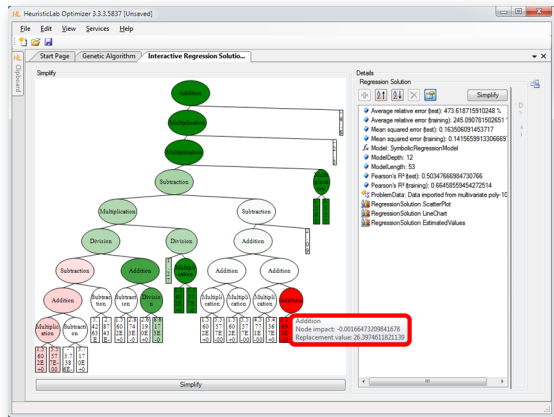


GECCO 2012

<http://dev.heuristiclab.com>

88

Symbolic Simplification and Node Impacts

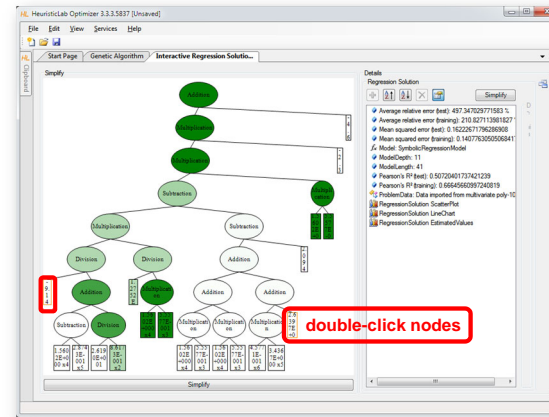


GECCO 2012

<http://dev.heuristiclab.com>

89

Manual Simplification

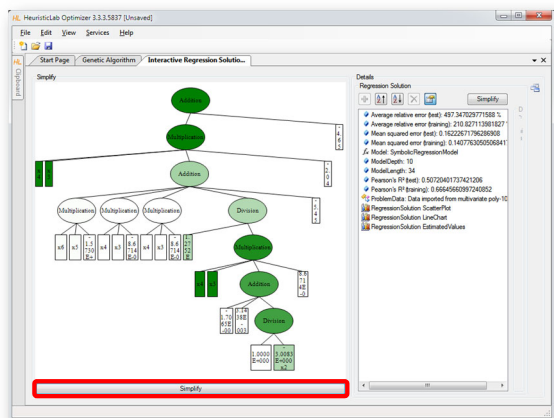


GECCO 2012

<http://dev.heuristiclab.com>

90

Automatic Symbolic Simplification



GECCO 2012

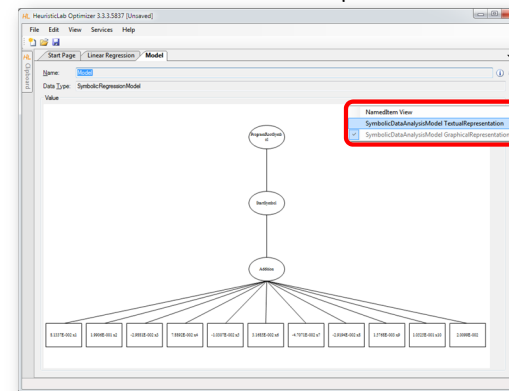
<http://dev.heuristiclab.com>

91

Textual Representations Are Also Available



- Use *ViewHost* to switch to textual representation view.

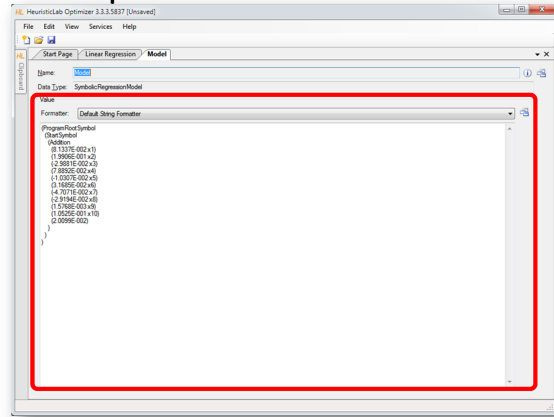


GECCO 2012

<http://dev.heuristiclab.com>

92

Default Textual Representation for Model Export

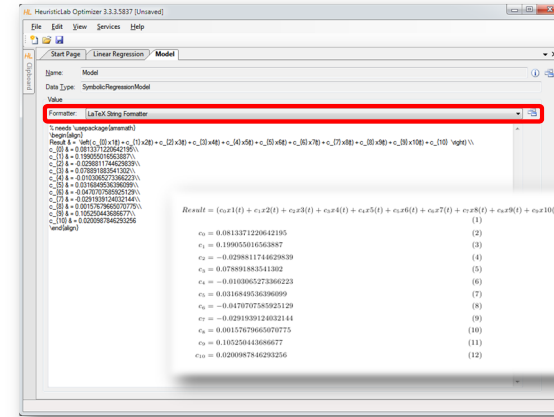


GECCO 2012

<http://dev.heuristiclab.com>

93

Textual Representation for Export to LaTeX

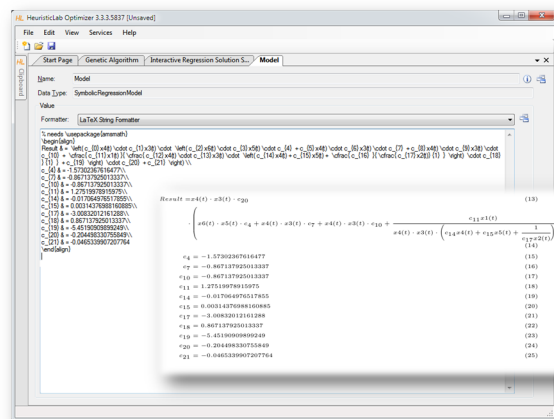


GECCO 2012

<http://dev.heuristiclab.com>

94

LaTeX Export



GECCO 2012

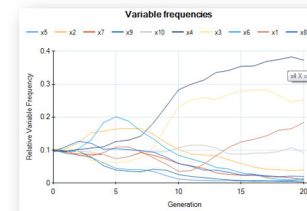
<http://dev.heuristiclab.com>

95

Variable Relevance Analysis



- Which variables are important to predict classes correctly?
- Demonstration
 - variable frequency analyzer
 - symbol frequency analyzer
 - variable impacts



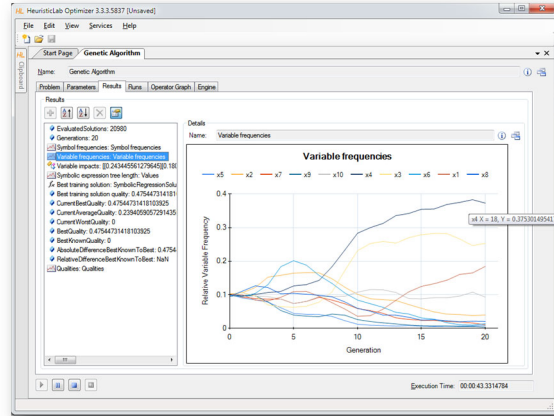
Relative variable relevance	
x4	0.302803859106654
x3	0.241170172985569
x1	0.179112369714678
x10	0.0589664719249172
x2	0.0544635184742382
x6	0.0446774403657897
x8	0.0436011597048278
x7	0.0331173502974243
x5	0.0226252246461621
x9	0.01946242278034

GECCO 2012

<http://dev.heuristiclab.com>

96

Inspect Variable Frequency Chart

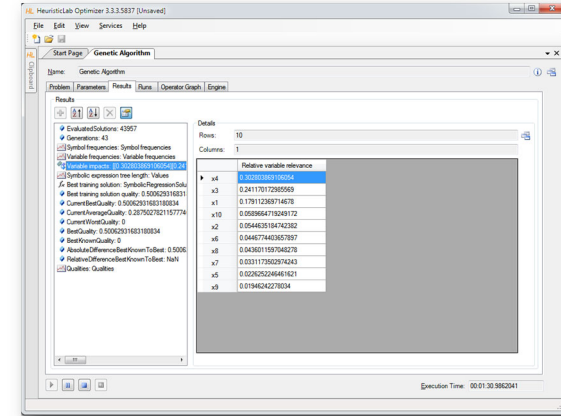


GECCO 2012

<http://dev.heuristiclab.com>

97

Inspect Variable Impacts

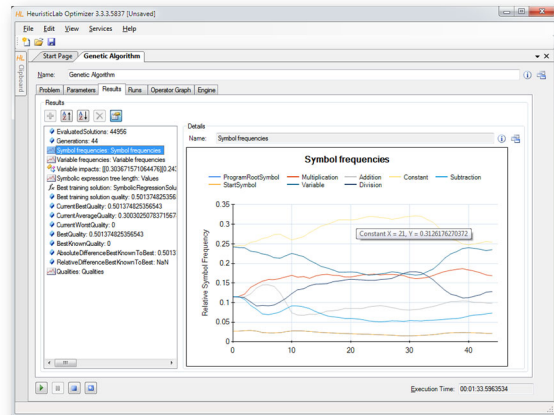


GECCO 2012

<http://dev.heuristiclab.com>

98

Inspect Symbol Frequencies



GECCO 2012

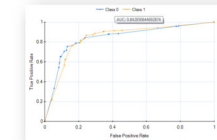
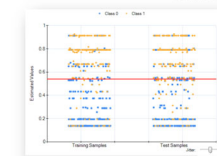
<http://dev.heuristiclab.com>

99

Classification with HeuristicLab



- Symbolic classification
 - evolve discriminating function using GP
 - find thresholds to assign classes
- Demonstration
 - real world medical application
 - model accuracy
 - visualization of model output
 - discriminating function output
 - ROC-curve
 - confusion matrix



	Actual Class 0	Actual Class 1
Predicted Class 0	197	29
Predicted Class 1	64	190

GECCO 2012

<http://dev.heuristiclab.com>

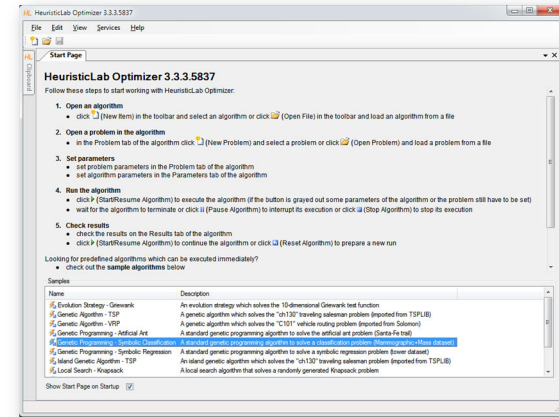
100

Case Study: Classification

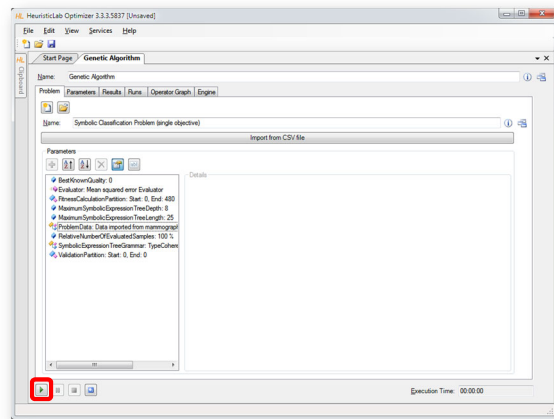


- Real world medical dataset (*Mammographic Mass*) from UCI Machine Learning Repository
 - data from non-invasive mammography screening
 - variables:
 - patient age
 - visual features of inspected mass lesions: shape, margin, density
 - target variable: severity (malignant, benign)
- download <http://dev.heuristiclab.com/AdditionalMaterial#GECCO2012>

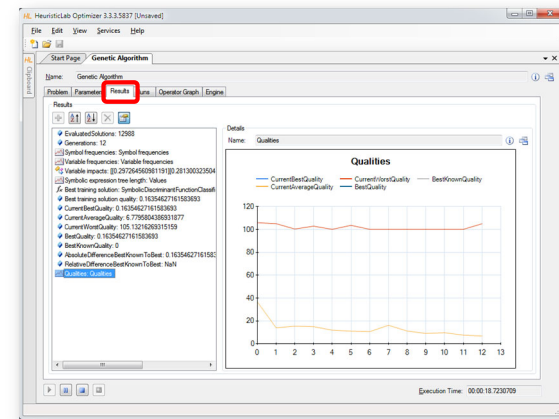
Open Sample



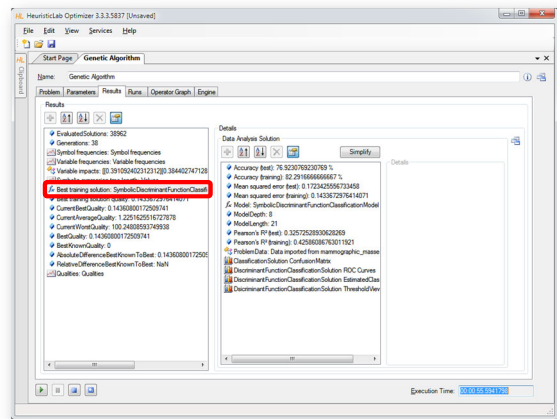
Configure and Run Algorithm



Inspect Quality Linechart



Inspect Best Training Solution

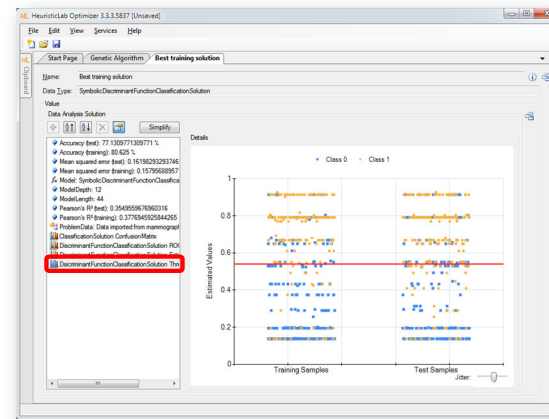


GECCO 2012

<http://dev.heuristiclab.com>

105

Inspect Model Output and Thresholds

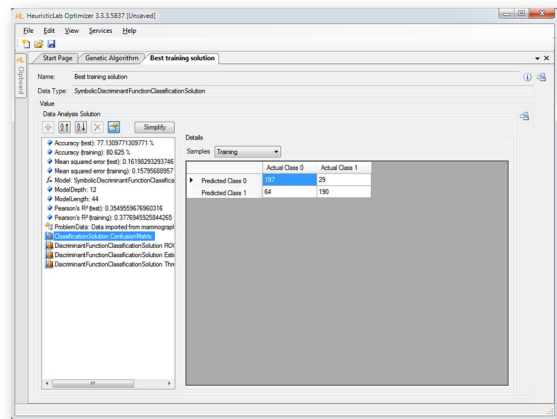


GECCO 2012

<http://dev.heuristiclab.com>

106

Inspect Confusion Matrix

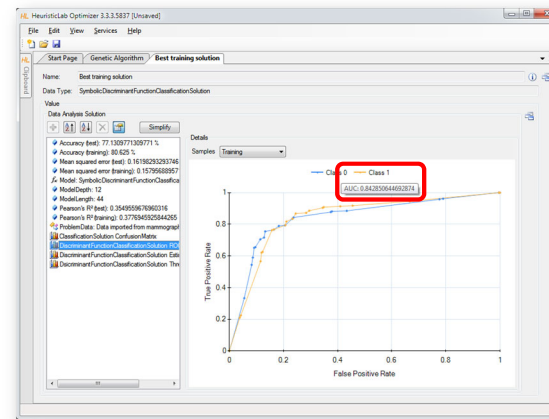


GECCO 2012

<http://dev.heuristiclab.com>

107

Inspect ROC Curve



GECCO 2012

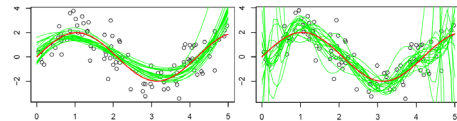
<http://dev.heuristiclab.com>

108

Validation of Results

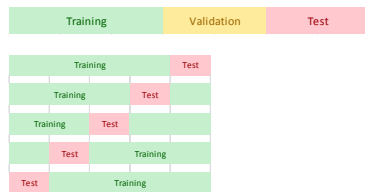


- Overfitting



- Strategies to reduce overfitting

- validation partition
- cross-validation



GECCO 2012

<http://dev.heuristiclab.com>

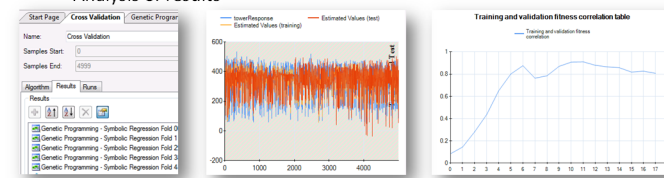
109

Validation of Results



- Demonstration

- Configuration of a validation set
- Inspection of best solution on validation set
- Analysis of training- and validation fitness correlation
- Cross-validation
 - Configuration
 - Analysis of results

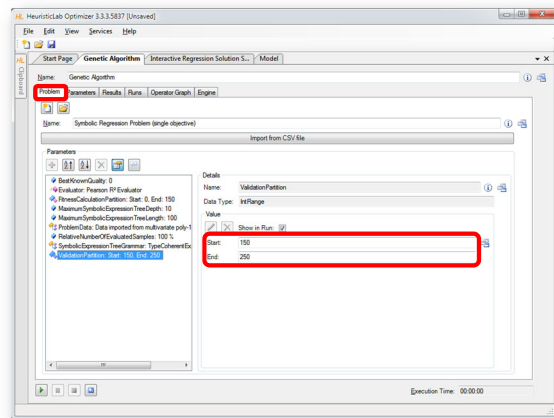


GECCO 2012

<http://dev.heuristiclab.com>

110

Configuration of Validation Partition

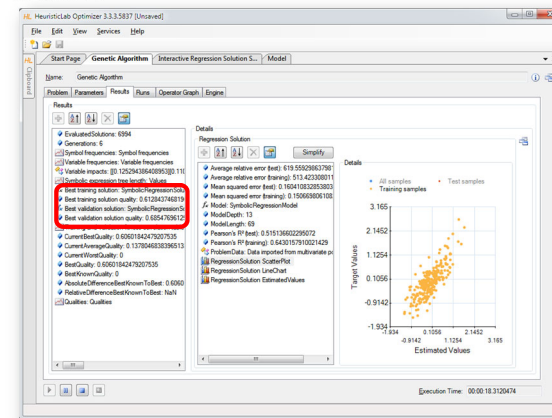


GECCO 2012

<http://dev.heuristiclab.com>

111

Inspect Best Model on Validation Partition

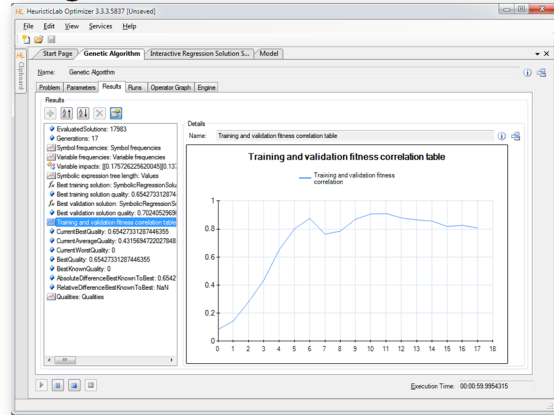


GECCO 2012

<http://dev.heuristiclab.com>

112

Inspect Linechart of Correlation of Training and Validation Fitness



GECCO 2012

<http://dev.heuristiclab.com>

113

Agenda



- Objectives of the Tutorial
- Introduction
- Where to get HeuristicLab?
- Plugin Infrastructure
- Graphical User Interface
- Available Algorithms & Problems
- **Demonstration Part I: Working with HeuristicLab**
- **Demonstration Part II: Data-based Modeling**
- Some Additional Features
- Planned Features
- Team
- Suggested Readings
- Bibliography
- Questions & Answers

GECCO 2012

<http://dev.heuristiclab.com>

114

Some Additional Features



- HeuristicLab Hive
 - parallel and distributed execution of algorithms and experiments on many computers in a network
- Optimization Knowledge Base (OKB)
 - database to store algorithms, problems, parameters and results
 - open to the public
 - open for other frameworks
 - analyze and store characteristics of problem instances and problem classes
- External solution evaluation and simulation-based optimization
 - interface to couple HeuristicLab with other applications (MATLAB, AnyLogic, ...)
 - supports different protocols (command line parameters, TCP, ...)
- Meta-optimization
 - apply heuristic optimization algorithms to find optimal parameter settings for heuristic optimization algorithms

GECCO 2012

<http://dev.heuristiclab.com>

115

Planned Features



- Algorithms & Problems
 - steady-state genetic algorithm
 - unified tabu search for vehicle routing
 - scatter search
 - job shop scheduling
 - ...
- Cloud Computing
 - port HeuristicLab Hive to Windows Azure
- Linux
 - port HeuristicLab to run on Mono and Linux machines
- Have a look at the HeuristicLab roadmap
 - <http://dev.heuristiclab.com/trac/hl/core/roadmap>
- Any other ideas, requests or recommendations?
 - join our HeuristicLab Google group heuristiclab@googlegroups.com or
 - write an e-mail to support@heuristiclab.com
 - Friend our Facebook group
 - Follow our youtube channel www.youtube.com/user/HeuristicLab

GECCO 2012

<http://dev.heuristiclab.com>

116

HeuristicLab Team



Heuristic and Evolutionary Algorithms Laboratory (HEAL)
School of Informatics, Communications and Media
University of Applied Sciences Upper Austria

Softwarepark 11
A-4232 Hagenberg
AUSTRIA

WWW: <http://heal.heuristiclab.com>



Suggested Readings



- S. Voß, D. Woodruff (Edts.)
Optimization Software Class Libraries
Kluwer Academic Publishers, 2002



- M. Affenzeller, S. Winkler, S. Wagner, A. Beham
**Genetic Algorithms and Genetic Programming
Modern Concepts and Practical Applications**
CRC Press, 2009



Bibliography



- S. Wagner, M. Affenzeller
HeuristicLab: A generic and extensible optimization environment
Adaptive and Natural Computing Algorithms, pp. 538-541
Springer, 2005
- S. Wagner, S. Winkler, R. Braune, G. Kronberger, A. Beham, M. Affenzeller
Benefits of plugin-based heuristic optimization software systems
Computer Aided Systems Theory - EUROCAST 2007, Lecture Notes in Computer Science, vol. 4739, pp. 747-754
Springer, 2007
- S. Wagner, G. Kronberger, A. Beham, S. Winkler, M. Affenzeller
Modeling of heuristic optimization algorithms
Proceedings of the 20th European Modeling and Simulation Symposium, pp. 106-111
DIPTEM University of Genova, 2008
- S. Wagner, G. Kronberger, A. Beham, S. Winkler, M. Affenzeller
Model driven rapid prototyping of heuristic optimization algorithms
Computer Aided Systems Theory - EUROCAST 2009, Lecture Notes in Computer Science, vol. 5717, pp. 729-736
Springer, 2009
- S. Wagner
Heuristic optimization software systems - Modeling of heuristic optimization algorithms in the HeuristicLab software environment
Ph.D. thesis, Johannes Kepler University Linz, Austria, 2009.
- S. Wagner, A. Beham, G. Kronberger, M. Kommenda, E. Pitzer, M. Kofler, S. Vonoflen, S. Winkler, V. Dorfer, M. Affenzeller
HeuristicLab 3.3: A unified approach to metaheuristic optimization
Actas del séptimo congreso español sobre Metaheurísticas, Algoritmos Evolutivos y Bioinspirados (MAEB'2010), 2010
- Detailed list of all publications of the HEAL research group: <http://research.fh-ooe.at/de/orkunit/detail/356#showpublications>

Questions & Answers



<http://dev.heuristiclab.com>

heuristiclab@googlegroups.com